


 **Primary 4 Science (Term 4) - Maha Bodhi (2020)** ↗

Add Questions

Assign

Settings

Review

 Duplicate Print Delete Assign Test**Test Introduction**[+ Add Introduction](#)**64 Questions** (77 Points)Question Bank: 19,950 Questions 

Test Questions

0 Test Assignments

Question 1

Primary 4 Science » Primary 4 Science (Term 4)

2 pts

For each question, four options are given. One of them is the correct answer. Make your choice (1, 2, 3 or 4) and choose your correct answer. (28 x 2 marks = 56 marks)

Henry boiled some soup in the pot shown below.



He is able to hold the pot of boiling soup using the rubber handles. This is because rubber is a _____.

- A) light material
- B) flexible material
- ✓ C) poor conductor of heat
- D) good conductor of heat

Question Type: Multiple Choice
Randomize Answers: No
Date Added: Fri 30th Jul 2021
Last Modified: N/A
QID#: 28,563,776

[Answers](#) |
 [Edit](#) |
 [Duplicate](#) |
 [Used In](#) |
 [Reorder](#)

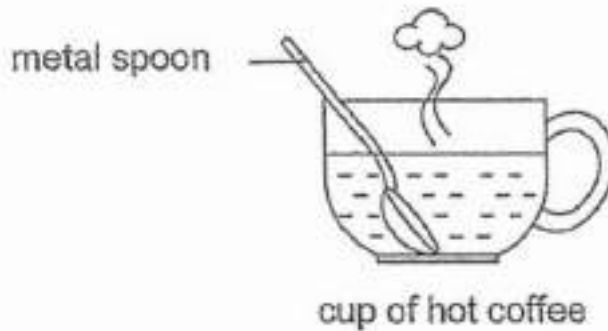
[Remove From Test](#)

Question 2

Primary 4 Science » Primary 4 Science (Term 4)

2 pts

Ronald places a metal spoon in a cup of hot coffee.



The spoon becomes hotter after a while.

Which one of the following explains this?

- A) The cup loses heat to the hot coffee.
- B) The spoon loses heat to the hot coffee.
- C) The hot coffee gains heat from the spoon.
- ✓ D) The spoon gains heat from the hot coffee.

Question Type: Multiple Choice
Randomize Answers: No
Date Added: Fri 30th Jul 2021
Last Modified: N/A
QID#: 28,563,782

[Answers](#) |
 [Edit](#) |
 [Duplicate](#) |
 [Used In](#) |
 [Reorder](#)

[Remove From Test](#)

Question 3

Primary 4 Science » Primary 4 Science (Term 4)

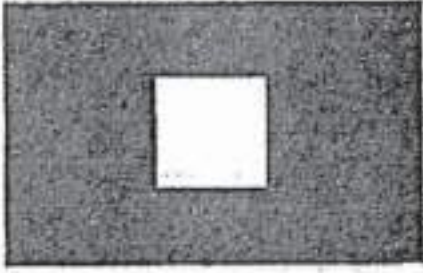
2 pts

The set-up below shows light shining on a wooden ball.

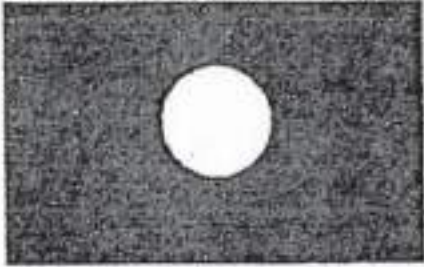


Which one of the following would likely be seen on the screen?

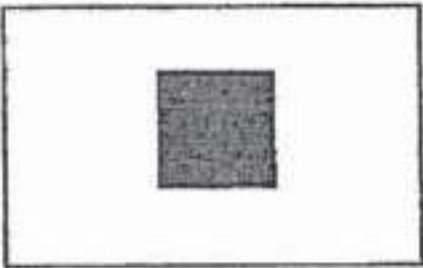
A)



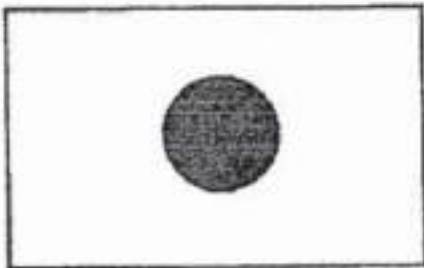
B)



C)



✓ D)



Question Type: Multiple Choice
Randomize Answers: No
Date Added: Fri 30th Jul 2021
Last Modified: N/A
QID#: 28,563,788

[Answers](#) | [Edit](#) | [Duplicate](#) | [Used In](#) | [Reorder](#)

[Remove From Test](#)

Question 4

Primary 4 Science » Primary 4 Science (Term 4)

2 pts

Which animal has a larva as a stage in its life cycle?

A) frog

✓ B) beetle

- C) chicken
- D) cockroach

Question Type: Multiple Choice
Randomize Answers: No
Date Added: Fri 30th Jul 2021
Last Modified: N/A
QID#: 28,563,798

[Answers](#) | [Edit](#) | [Duplicate](#) | [Used In](#) | [Reorder](#)

[Remove From Test](#)

Question 5

Primary 4 Science » Primary 4 Science (Term 4)

2 pts

Which one of the following properties is true for both air and a ball?

- A) They can be seen.
- ✓ B) They take up space.
- C) They have fixed shapes.
- D) They have fixed volumes.

Question Type: Multiple Choice
Randomize Answers: No
Date Added: Fri 30th Jul 2021
Last Modified: N/A
QID#: 28,563,805

[Answers](#) | [Edit](#) | [Duplicate](#) | [Used In](#) | [Reorder](#)

[Remove From Test](#)

Question 6

Primary 4 Science » Primary 4 Science (Term 4)

2 pts

What is the function of a stem on a plant?

- A) makes food
- B) takes in water
- ✓ C) holds plant upright
- D) takes in mineral salts

Question Type: Multiple Choice
Randomize Answers: No
Date Added: Fri 30th Jul 2021
Last Modified: N/A
QID#: 28,563,816

[Answers](#) | [Edit](#) | [Duplicate](#) | [Used In](#) | [Reorder](#)

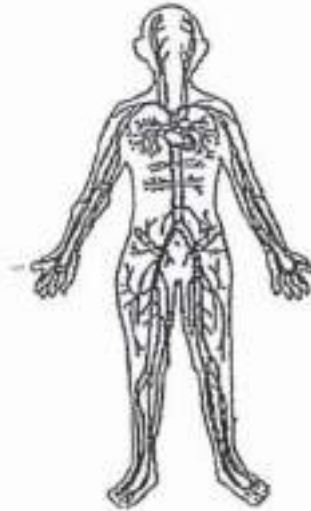
[Remove From Test](#)

Question 7

Primary 4 Science » Primary 4 Science (Term 4)

2 pts

Which organ system is shown in the diagram?



- A) skeletal system
- B) digestive system
- C) muscular system
- ✓ D) circulatory system

Question Type: Multiple Choice
Randomize Answers: No
Date Added: Fri 30th Jul 2021
Last Modified: N/A
QID#: 28,563,825

[Answers](#) | [Edit](#) | [Duplicate](#) | [Used In](#) | [Reorder](#)

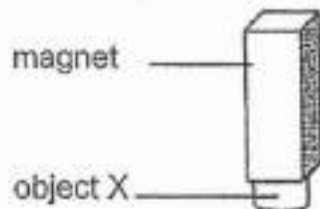
[Remove From Test](#)

Question 8

Primary 4 Science » Primary 4 Science (Term 4)

2 pts

A magnet attracts object X as shown in the diagram below.



Object X is made of _____.

- ✓ A) iron
- B) wood
- C) plastic
- D) aluminium

Question Type: Multiple Choice
Randomize Answers: No
Date Added: Fri 30th Jul 2021
Last Modified: N/A
QID#: 28,563,831

[Answers](#) | [Edit](#) | [Duplicate](#) | [Used In](#) | [Reorder](#)

[Remove From Test](#)

Question 9

Primary 4 Science » Primary 4 Science (Term 4)

2 pts

A snail hides itself in its shell when touched.



This shows that the snail is a living thing because it can _____.

- A) grow
- B) breathe
- ✓ C) respond
- D) reproduce

Question Type: Multiple Choice
Randomize Answers: No
Date Added: Fri 30th Jul 2021
Last Modified: N/A
QID#: 28,563,839

[Answers](#) | [Edit](#) | [Duplicate](#) | [Used In](#) | [Reorder](#)

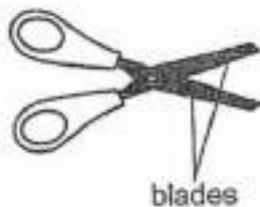
[Remove From Test](#)

Question 10

Primary 4 Science » Primary 4 Science (Term 4)

2 pts

The diagram shows a pair of scissors.



Metal is used to make the blades of the scissors because metal _____.

- A) can absorb water
- ✓ B) does not break easily
- C) can bend without breaking

D) does not allow light to pass through

Question Type: Multiple Choice
Randomize Answers: No
Date Added: Fri 30th Jul 2021
Last Modified: N/A
QID#: 28,563,848

[Answers](#) | [Edit](#) | [Duplicate](#) | [Used In](#) | [Reorder](#)

[Remove From Test](#)

Question 11

Primary 4 Science » Primary 4 Science (Term 4)

2 pts

Shu Ling puts a dented ping pong ball into a basin of hot water.



What will she observe after the dented ping pong ball is pushed down with a pair of tongs into the basin of hot water for a few minutes?

- A. The shape of ping pong ball changes.
- B. The water level in the basin increases.
- C. The volume of ping pong ball increases.
- D. The volume of water in the basin increases.

- A) A and D only
- ✓ B) A, B and C only
- C) B, C and D only
- D) A, B, C and D

Question Type: Multiple Choice
Randomize Answers: No
Date Added: Fri 30th Jul 2021
Last Modified: N/A
QID#: 28,563,853

[Answers](#) | [Edit](#) | [Duplicate](#) | [Used In](#) | [Reorder](#)

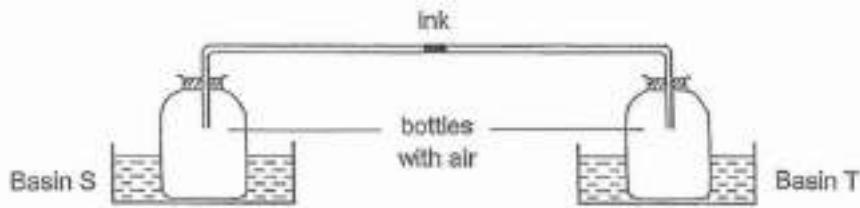
[Remove From Test](#)

Question 12

Primary 4 Science » Primary 4 Science (Term 4)

2 pts

Study the set-up shown below. Paul connected two identical bottles using a glass tube with a drop of ink. He placed one bottle in basin S and the other bottle in basin T. Both basins contained same amounts of water at different temperatures.



Which of the following is correct?

- ✓ A)

Movement of ink	Basin S	Basin T
<-----	10°C	80°C
- B)

Movement of ink	Basin S	Basin T
<-----	50°C	50°C
- C)

Movement of ink	Basin S	Basin T
----->	10°C	80°C
- D)

Movement of ink	Basin S	Basin T
----->	30°C	30°C

Question Type: Multiple Choice
 Randomize Answers: No
 Date Added: Fri 30th Jul 2021
 Last Modified: N/A
 QID#: 28,563,884

[Answers](#) | [Edit](#) | [Duplicate](#) | [Used In](#) | [Reorder](#)

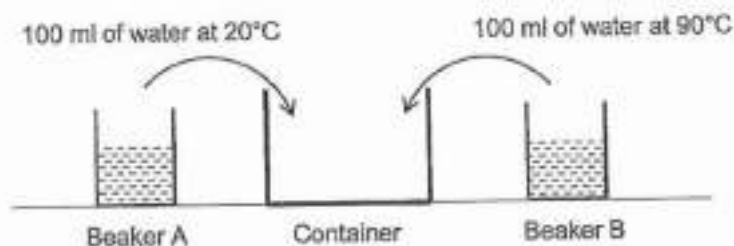
[Remove From Test](#)

Question 13

Primary 4 Science » Primary 4 Science (Term 4)

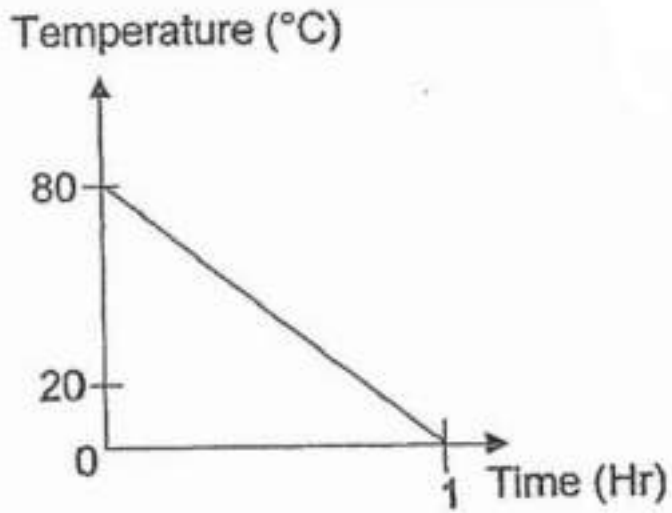
2 pts

Beaker A contained 100 ml of water at 20°C. Beaker B contained 100 ml of water at 90°C. Sharifah poured all the water in both beakers into a container as shown in the diagram below.

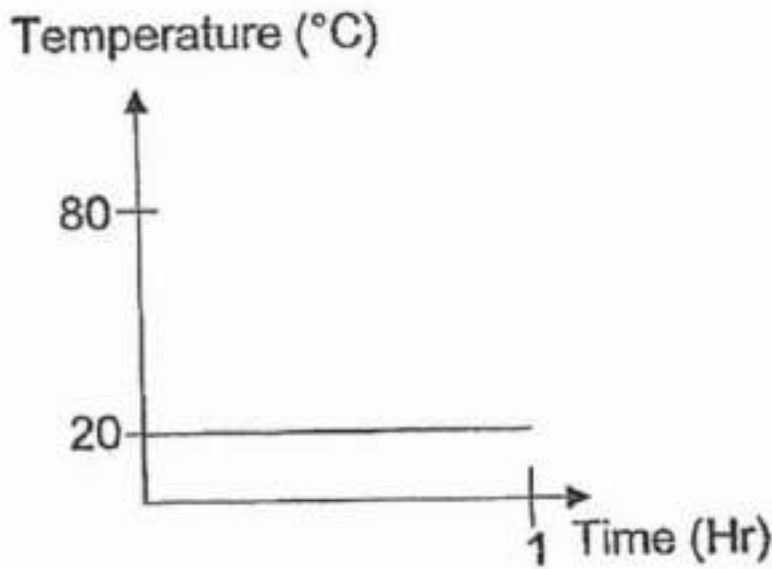


Which of the graphs below shows the temperature of the water in the container after an hour?

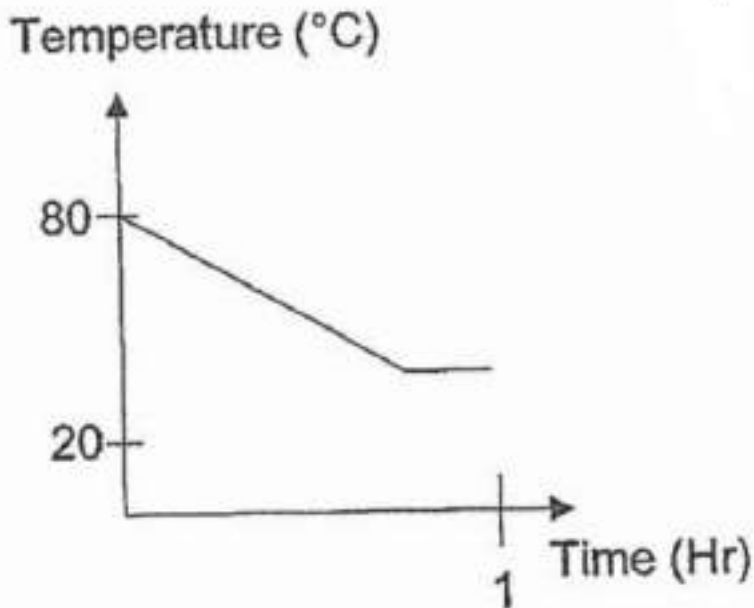
A)



B)

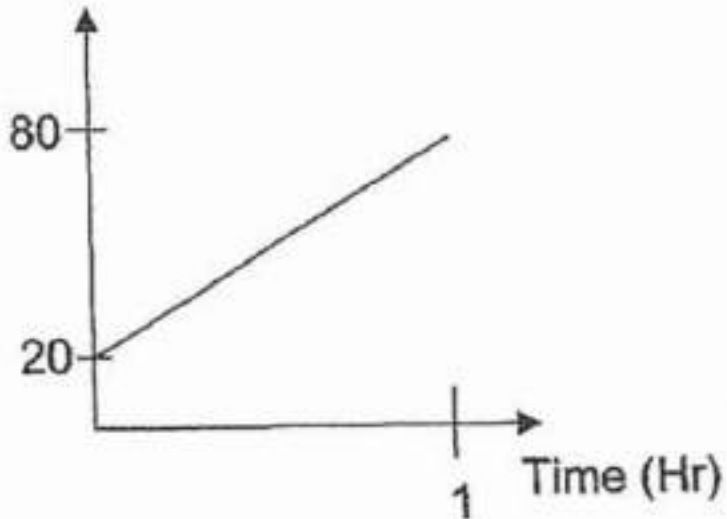


✓ C)



D)

Temperature (°C)



Question Type: Multiple Choice
Randomize Answers: No
Date Added: Fri 30th Jul 2021
Last Modified: N/A
QID#: 28,563,904

[Answers](#) | [Edit](#) | [Duplicate](#) | [Used In](#) | [Reorder](#)

[Remove From Test](#)

Question 14

Primary 4 Science » Primary 4 Science (Term 4)

2 pts

Two identical containers, X and Y, were filled with different amounts of tap water. The containers were heated at the same time for 15 minutes.



Which of the following gives the correct temperature of water in the containers after 15 minutes?

- A)

Container X	Container Y
28°C	28°C
- B)

Container X	Container Y
70°C	55°C
- ✓ C)

Container X	Container Y
55°C	70°C
- D)

Container X	Container Y

50°C	50°C
------	------

Question Type: Multiple Choice
Randomize Answers: No
Date Added: Fri 30th Jul 2021
Last Modified: N/A
QID#: 28,563,920

[Answers](#) | [Edit](#) | [Duplicate](#) | [Used In](#) | [Reorder](#)

[Remove From Test](#)

Question 15

Primary 4 Science » Primary 4 Science (Term 4)

2 pts

Study at the picture below.



Which of the following statements correctly explains why the girl was able to see the ball on the table?

- A) Light fell onto the ball on the table.
- ✓ B) Light was reflected from the ball to her eyes.
- C) Light shone into her eyes to allow her to see.
- D) Light was reflected from her eyes onto the ball.

Question Type: Multiple Choice
Randomize Answers: No
Date Added: Fri 30th Jul 2021
Last Modified: N/A
QID#: 28,563,927

[Answers](#) | [Edit](#) | [Duplicate](#) | [Used In](#) | [Reorder](#)

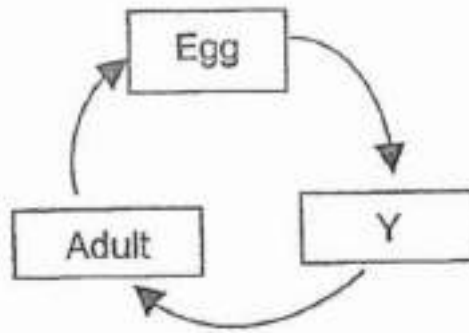
[Remove From Test](#)

Question 16

Primary 4 Science » Primary 4 Science (Term 4)

2 pts

Study the life cycle of a grasshopper below.



Stage Y is a _____.

- A) pupa
- B) larva
- ✓ C) nymph
- D) seedling

Question Type: Multiple Choice
Randomize Answers: No
Date Added: Fri 30th Jul 2021
Last Modified: N/A
QID#: 28,563,938

[Answers](#) | [Edit](#) | [Duplicate](#) | [Used In](#) | [Reorder](#)

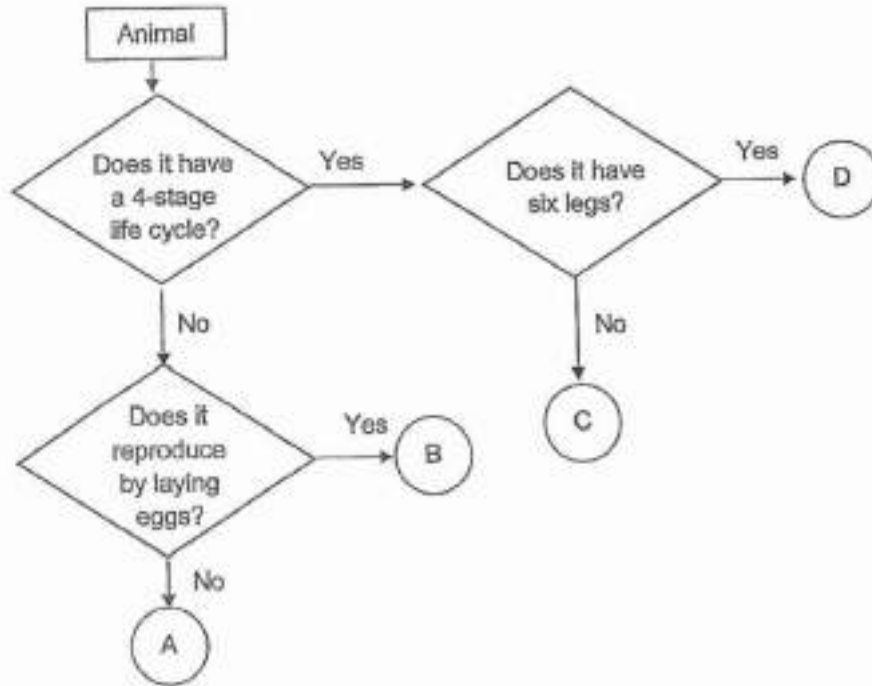
[Remove From Test](#)

Question 17

Primary 4 Science » Primary 4 Science (Term 4)

2 pts

Study the flowchart below.



Based on the flowchart above, which letter best represents a mealworm beetle?

- A) A
- B) B
- C) C
- ✓ D) D

Question Type: Multiple Choice
Randomize Answers: No
Date Added: Fri 30th Jul 2021
Last Modified: N/A
QID#: 28,563,942

[Answers](#) | [Edit](#) | [Duplicate](#) | [Used In](#) | [Reorder](#)

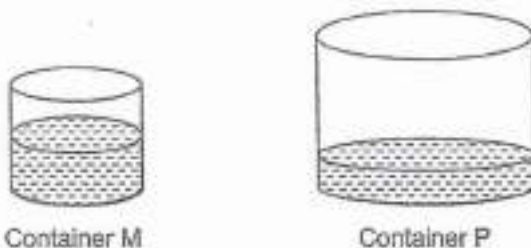
[Remove From Test](#)

Question 18

Primary 4 Science » Primary 4 Science (Term 4)

2 pts

Devi had two empty containers M and P. She poured 200 ml of coloured water into container M. She then poured all the coloured water from container M into container P as shown below.



Based on her observations, which of the following statements is not correct?

- A) The water takes the shape of containers M and P.
- B) The mass of water in both containers are the same.
- C) The volume of water in both containers are the same.
- ✓ D) The water in container M was compressed when poured in P.

Question Type: Multiple Choice
Randomize Answers: No
Date Added: Fri 30th Jul 2021
Last Modified: N/A
QID#: 28,563,946

[Answers](#) | [Edit](#) | [Duplicate](#) | [Used In](#) | [Reorder](#)

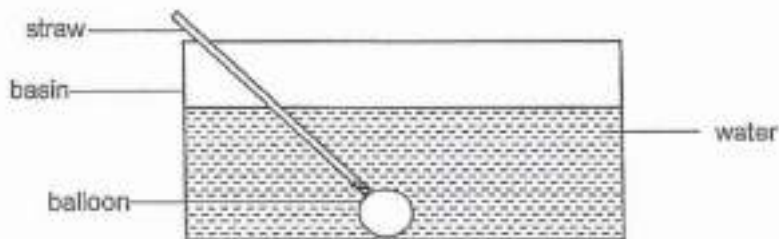
[Remove From Test](#)

Question 19

Primary 4 Science » Primary 4 Science (Term 4)

2 pts

Alden set up an experiment as shown below. He tied a metal straw to a deflated balloon and put it in water. He then blew some air into the balloon.



Which one of the following statements is true after he blew air into the deflated balloon?

- A) The water level will fall.
- ✓ B) The water level in basin will rise.
- C) There will not be a change in the water level.
- D) The volume of water in the basin will increase.

Question Type: Multiple Choice
Randomize Answers: No
Date Added: Fri 30th Jul 2021
Last Modified: N/A
QID#: 28,563,950

[Answers](#) | [Edit](#) | [Duplicate](#) | [Used In](#) | [Reorder](#)

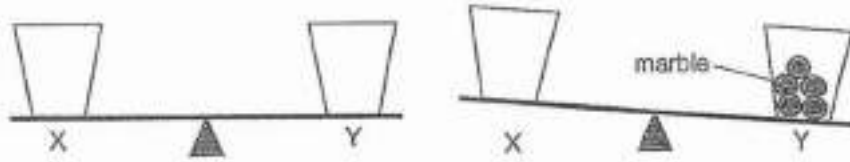
[Remove From Test](#)

Question 20

Primary 4 Science » Primary 4 Science (Term 4)

2 pts

Jane had two identical cups, X and Y. She placed the cups on a balance as shown in diagram. She then placed five marbles in cup Y and observed that the balance tilted to one side as shown below.



Which one of the following conclusions is correct?

- A) Air in cup Y is compressed.
- B) Cup X has a greater mass than cup Y.
- C) Cup Y has a greater mass than cup X.
- ✓ D) Marbles in cup Y occupy space and have mass.

Question Type: Multiple Choice
Randomize Answers: No
Date Added: Fri 30th Jul 2021
Last Modified: N/A
QID#: 28,563,987

[Answers](#) | [Edit](#) | [Duplicate](#) | [Used In](#) | [Reorder](#)

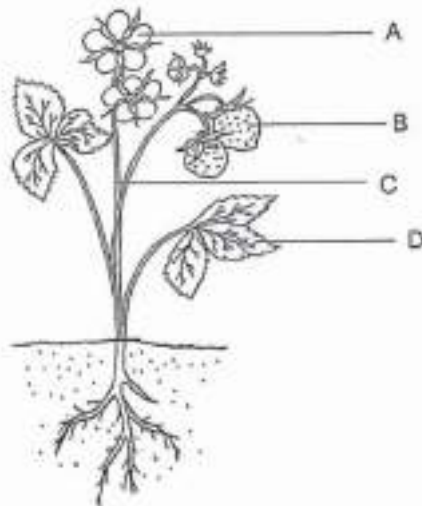
[Remove From Test](#)

Question 21

Primary 4 Science » Primary 4 Science (Term 4)

2 pts

The diagram below shows a plant.



Which one of the plant parts, A, B, C or D, helps the plant to make food?

- A) A
- B) B
- C) C
- ✓ D) D

Question Type: Multiple Choice
Randomize Answers: No
Date Added: Fri 30th Jul 2021
Last Modified: N/A
QID#: 28,564,005

[Answers](#) | [Edit](#) | [Duplicate](#) | [Used In](#) | [Reorder](#)

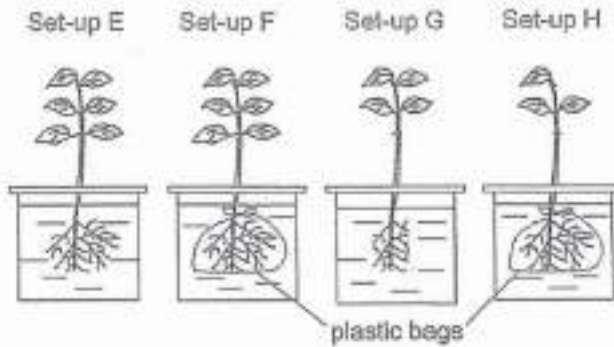
[Remove From Test](#)

Question 22

Primary 4 Science » Primary 4 Science (Term 4)

2 pts

Hannah sets up an experiment to find out if the roots of plants took in water. He wrapped the roots of plants in set-up F and H. He then placed the four plants in containers with the same amount of water as shown in the diagram below.



Which of the two set-ups above should she choose to conduct the experiment?

- ✓ A) E and F only
- B) E and G only
- C) F and H only
- D) G and H only

Question Type: Multiple Choice
Randomize Answers: No
Date Added: Fri 30th Jul 2021
Last Modified: N/A
QID#: 28,564,028

[Answers](#) | [Edit](#) | [Duplicate](#) | [Used In](#) | [Reorder](#)

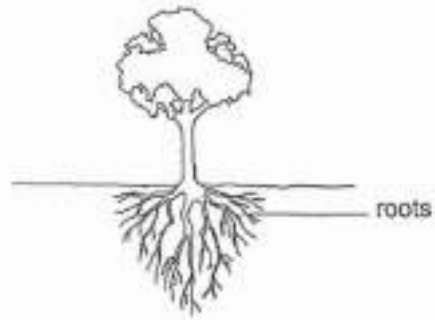
[Remove From Test](#)

Question 23

Primary 4 Science » Primary 4 Science (Term 4)

2 pts

The diagram below shows a tree.



Which one of the following statements explains why the tree will not get blown away during a heavy rain?

- A) Its leaves spread out to protect it.
- B) Its trunk holds the tree to the ground.
- ✓ C) Its roots hold the tree firmly to the ground.
- D) Its branches support the tree from being blown away.

Question Type: Multiple Choice
Randomize Answers: No
Date Added: Fri 30th Jul 2021
Last Modified: N/A
QID#: 28,564,070

[Answers](#) | [Edit](#) | [Duplicate](#) | [Used In](#) | [Reorder](#)

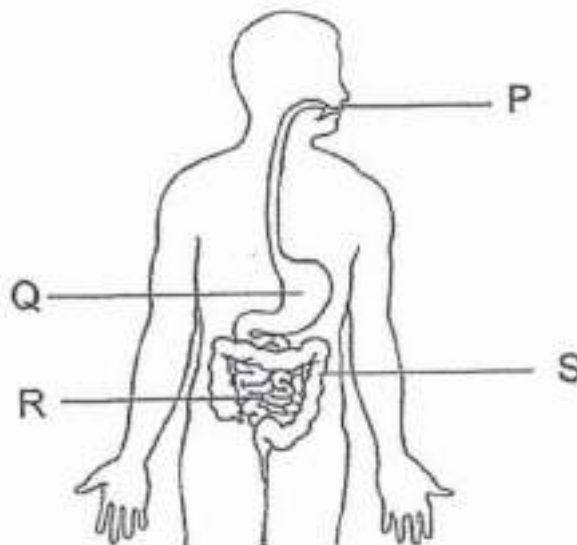
[Remove From Test](#)

Question 24

Primary 4 Science » Primary 4 Science (Term 4)

2 pts

Study the diagram below.



Identify the parts where digestion takes place.

- A) P and Q only
- B) R and S only
- ✓ C) P, Q and R only
- D) Q, R and S only

Question Type: Multiple Choice
Randomize Answers: No
Date Added: Fri 30th Jul 2021
Last Modified: N/A
QID#: 28,564,074

[Answers](#) | [Edit](#) | [Duplicate](#) | [Used In](#) | [Reorder](#)

[Remove From Test](#)

Question 25

Primary 4 Science » Primary 4 Science (Term 4)

2 pts

Valerie placed objects A, B, C and D near the North pole of a magnet, one at a time, and recorded her observations in the table below.



Object	Observation
A	Repulsion
B	Attraction
C	No reaction
D	Attraction

Based on her observation, which statement is true?

- A) Object C is made of steel.
- B) Objects B and D have the same magnetic strength.
- ✓ C) Objects A will be attracted by the South pole of the magnet.
- D) Objects B and D will be repelled by the South pole of the magnet.

Question Type: Multiple Choice
Randomize Answers: No
Date Added: Fri 30th Jul 2021
Last Modified: N/A
QID#: 28,564,078

[Answers](#) | [Edit](#) | [Duplicate](#) | [Used In](#) | [Reorder](#)

[Remove From Test](#)

Question 26

Primary 4 Science » Primary 4 Science (Term 4)

2 pts

Two strong bar magnets are placed next to each other on a table. A plastic ping pong ball is placed at the edge of the table.



What will most likely happen to the ping pong ball when magnet X is pushed towards magnet Y as shown above?

The ping pong ball will _____.

- A) not move as it is a non-magnetic material
- B) be compressed as it has no definite volume
- C) move to the left as it is attracted by magnet Y
- ✓ D) roll off the table as the two magnets repel each other

Question Type: Multiple Choice
 Randomize Answers: No
 Date Added: Fri 30th Jul 2021
 Last Modified: N/A
 QID#: 28,564,083

[Answers](#) | [Edit](#) | [Duplicate](#) | [Used In](#) | [Reorder](#)

[Remove From Test](#)

Question 27

Primary 4 Science » Primary 4 Science (Term 4)

2 pts

Study the table below. It shows the characteristics of living things P, Q, and R. A tick (✓) shows that the characteristic is present.

Living thing	Characteristics		
	makes its own food	reproduce by spores	have scales
P	x	x	✓
Q	x	✓	x
R	✓	✓	x

Which one of the following below best represents the living things P, Q and R?

- A)

P	Q	R
fungi	fern	reptile
- B)

P	Q	R
fish	fern	fungi
- ✓ C)

P	Q	R
reptile	fungi	fern
- D)

P	Q	R
fern	fungi	fish

Question Type: Multiple Choice
Randomize Answers: No
Date Added: Fri 30th Jul 2021
Last Modified: N/A
QID#: 28,564,088

[Answers](#) | [Edit](#) | [Duplicate](#) | [Used In](#) | [Reorder](#)

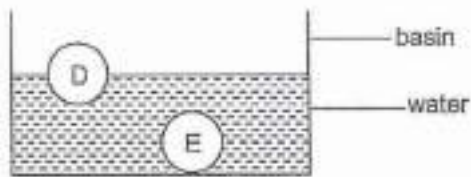
[Remove From Test](#)

Question 28

Primary 4 Science » Primary 4 Science (Term 4)

2 pts

Mei Xin placed two similar sized balls, D and E, made of different materials in a basin of water as shown below.



Based on her observation, what can Mei Xin conclude about the materials for D and E?

- A) D is heavier than E.
- B) D is smaller than E.
- C) D absorbs more water than E.
- ✓ D) D floats on water but E does not.

Question Type: Multiple Choice
Randomize Answers: No
Date Added: Fri 30th Jul 2021
Last Modified: N/A
QID#: 28,564,093

[Answers](#) | [Edit](#) | [Duplicate](#) | [Used In](#) | [Reorder](#)

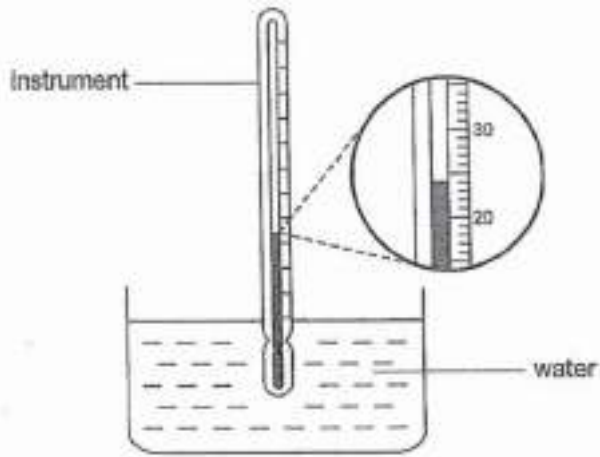
[Remove From Test](#)

Question 29

Primary 4 Science » Primary 4 Science (Term 4)

1 pt

Amelia used an instrument to measure the temperature of water in a container,



What is the instrument called?

Accepted answers:

- ✓ Laboratory thermometer

Question Type: Free Text
Date Added: Fri 30th Jul 2021
Last Modified: N/A
QID#: 28,566,471

[Answers](#) | [Edit](#) | [Duplicate](#) | [Used In](#) | [Reorder](#)

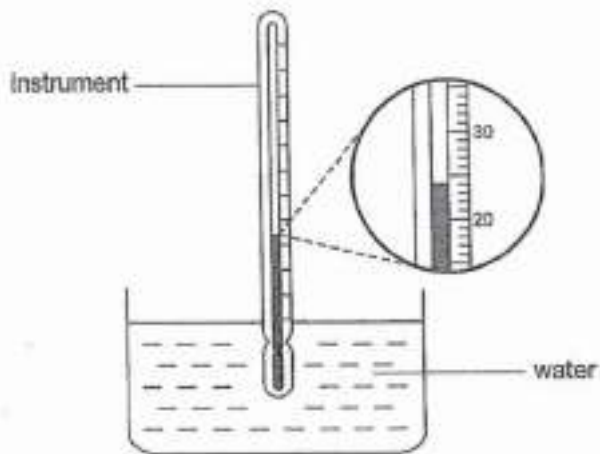
[Remove From Test](#)

Question 30

Primary 4 Science » Primary 4 Science (Term 4)

1 pt

Amelia used an instrument to measure the temperature of water in a container,



What is the temperature of the water in the glass?

Accepted answers:

- ✓ 24 degree celsius
- ✓ 24 degrees
- ✓ 24

Question Type: Free Text
Date Added: Fri 30th Jul 2021
Last Modified: N/A
QID#: 28,566,484

Correctly answered feedback

24°C

Incorrectly answered feedback

24°C

[Answers](#) |
 [Edit](#) |
 [Duplicate](#) |
 [Used In](#) |
 [Reorder](#)

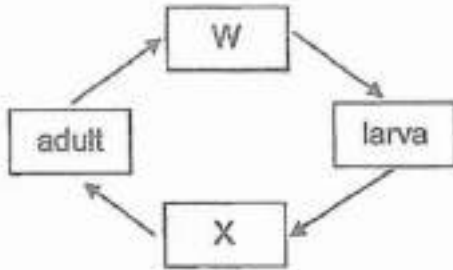
[Remove From Test](#)

Question 31

Primary 4 Science » Primary 4 Science (Term 4)

2 pts

The diagram below shows the stages in the life cycle of a butterfly.



Choose the correct words from the list to answer the questions below.

Name the two stages W and X.

Clue	Match
Stage W: _____	Egg
Points: +1 -0	
Stage X: _____	Pupa
Points: +1 -0	
<i>Incorrect match option</i>	<i>Caterpillar</i>
<i>Incorrect match option</i>	<i>Seed</i>

Question Type: Matching
Shuffle Mode: Shuffle Matches Only
Date Added: Fri 30th Jul 2021
Last Modified: N/A
QID#: 28,566,497

[Answers](#) |
 [Edit](#) |
 [Duplicate](#) |
 [Used In](#) |
 [Reorder](#)

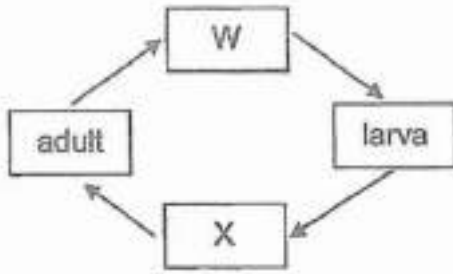
[Remove From Test](#)

Question 32

Primary 4 Science » Primary 4 Science (Term 4)

1 pt

The diagram below shows the stages in the life cycle of a butterfly.



State one other animal that has a similar life cycle as a butterfly.

Accepted answers:

✓ Mealworm Beetle

Question Type: Free Text
Date Added: Fri 30th Jul 2021
Last Modified: N/A
QID#: 28,566,507

[Answers](#) | [Edit](#) | [Duplicate](#) | [Used In](#) | [Reorder](#)

[Remove From Test](#)

Question 33

Primary 4 Science » Primary 4 Science (Term 4)

1 pt

Fill in the correct parts of a plant below.

Functions of plant parts	Plant parts
It takes in water for the plant.	

Accepted answers:

✓ roots

Question Type: Free Text
Date Added: Fri 30th Jul 2021
Last Modified: N/A
QID#: 28,566,515

[Answers](#) | [Edit](#) | [Duplicate](#) | [Used In](#) | [Reorder](#)

[Remove From Test](#)

Question 34

Primary 4 Science » Primary 4 Science (Term 4)

1 pt

Fill in the correct parts of a plant below.

Functions of plant parts	Plant parts
It makes food for the plant.	

Accepted answers:

✓ leaf

Question Type: Free Text
Date Added: Fri 30th Jul 2021
Last Modified: N/A
QID#: 28,566,521

[Answers](#) | [Edit](#) | [Duplicate](#) | [Used In](#) | [Reorder](#)

[Remove From Test](#)

Question 35

Primary 4 Science » Primary 4 Science (Term 4)

3 pts

Match the following animals to the correct groups.

Clue

Match



Reptile



Points: +1 -0



Amphibian



Points: +1 -0



Mammal



Points: +1 -0

Incorrect match option

Bird

Question Type: Matching
Shuffle Mode: Shuffle Matches Only
Date Added: Fri 30th Jul 2021
Last Modified: N/A

QID#: 28,566,545

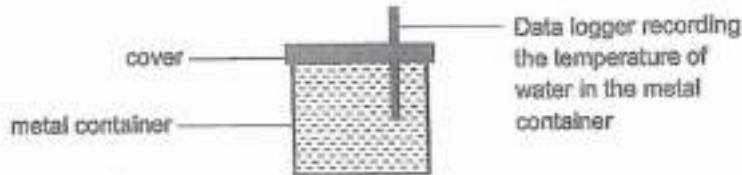
[Answers](#) | [Edit](#) | [Duplicate](#) | [Used In](#) | [Reorder](#)[Remove From Test](#)

Question 36

Primary 4 Science » Primary 4 Science (Term 4)

0 pts

Jason poured 500ml of water at 70°C into a metal container and sealed it as shown in the diagram below.



The temperature of the water was taken at regular intervals using the data logger. After 20 minutes, the temperature of the water changed.

Explain the change in the temperature of water after 20 minutes. (1 mark)

This question is designed for extended answers that parent/ teacher will have to assign and guide child to attempt after the test has been completed.

Grading: This question type is not graded on this system and will not affect the final score as it was designed in such a way that it requires manual assistance.

Question Type: Essay
Date Added: Fri 30th Jul 2021
Last Modified: N/A
QID#: 28,566,553

Correctly answered feedback

The temperature of the water decreased as it lost heat to the surroundings.

Incorrectly answered feedback

The temperature of the water decreased as it lost heat to the surroundings.

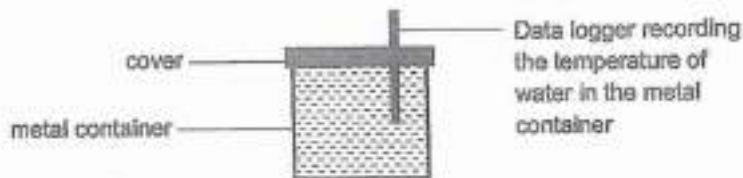
[Answers](#) | [Edit](#) | [Duplicate](#) | [Used In](#) | [Reorder](#)[Remove From Test](#)

Question 37

Primary 4 Science » Primary 4 Science (Term 4)

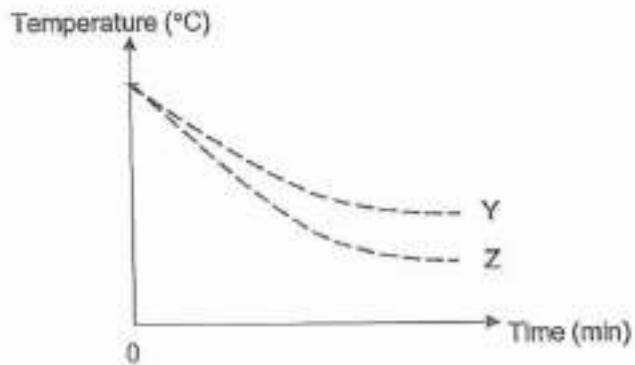
0 pts

Jason poured 500ml of water at 70°C into a metal container and sealed it as shown in the diagram below.



The temperature of the water was taken at regular intervals using the data logger. After 20 minutes, the temperature of the water changed.

Jason repeated the experiment using a plastic container. The graph below shows the change in the temperature of water using the metal and plastic containers.



Which line, Y or Z, in the graph above shows the temperature of the water in the plastic container? Explain your answer. [1]

This question is designed for extended answers that parent/ teacher will have to assign and guide child to attempt after the test has been completed.

Grading: This question type is not graded on this system and will not affect the final score as it was designed in such a way that it requires manual assistance.

Question Type: Essay
Date Added: Fri 30th Jul 2021
Last Modified: N/A
QID#: 28,566,591

Correctly answered feedback

Line Y. Which shows a slower decrease in the temperature of water. As plastic is a poorer conductor of heat, the water lost heat slower through the plastic container to the surroundings.

Incorrectly answered feedback

Line Y. Which shows a slower decrease in the temperature of water. As plastic is a poorer conductor of heat, the water lost heat slower through the plastic container to the surroundings.

[Answers](#) | [Edit](#) | [Duplicate](#) | [Used In](#) | [Reorder](#)

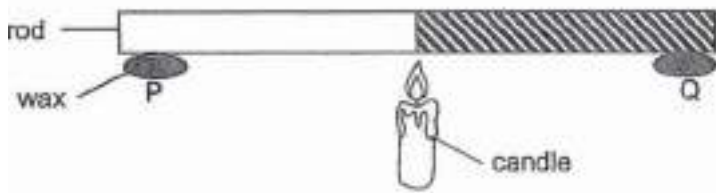
[Remove From Test](#)

Question 38

Primary 4 Science » Primary 4 Science (Term 4)

0 pts

The rod shown below is made of two materials, metal and plastic. Two pieces of wax of the same size, P and Q, are attached to the two ends of the rod at equal distance from the flame.



What will you observe to identify which part of the rod is made of metal or plastic? (1 mark)

This question is designed for extended answers that parent/ teacher will have to assign and guide child to attempt after the test has been completed.

Grading: This question type is not graded on this system and will not affect the final score as it was designed in such a way that it requires manual assistance.

Question Type: Essay
Date Added: Fri 30th Jul 2021
Last Modified: N/A
QID#: 28,566,604

Correctly answered feedback

The wax that is stuck on the metal rod will drop off first.

Incorrectly answered feedback

The wax that is stuck on the metal rod will drop off first.

[Answers](#) | [Edit](#) | [Duplicate](#) | [Used In](#) | [Reorder](#)

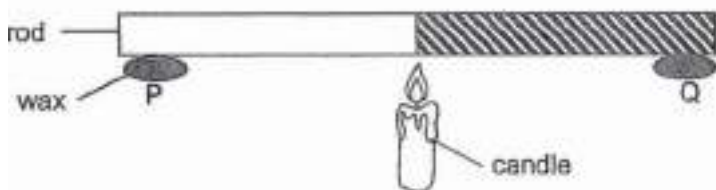
[Remove From Test](#)

Question 39

Primary 4 Science » Primary 4 Science (Term 4)

0 pts

The rod shown below is made of two materials, metal and plastic. Two pieces of wax of the same size, P and Q, are attached to the two ends of the rod at equal distance from the flame.



Explain your observation in the previous question. (1 mark)

This question is designed for extended answers that parent/ teacher will have to assign and guide child to attempt after the test has been completed.

Grading: This question type is not graded on this system and will not affect the final score as it was designed in such a way that it requires manual assistance.

Question Type: Essay
Date Added: Fri 30th Jul 2021
Last Modified: N/A
QID#: 28,566,613

Correctly answered feedback

Metal is a good conductor of heat and allows heat to pass through it easily.

Incorrectly answered feedback

Metal is a good conductor of heat and allows heat to pass through it easily.

[Answers](#) | [Edit](#) | [Duplicate](#) | [Used In](#) | [Reorder](#)

[Remove From Test](#)

Question 40

Primary 4 Science » Primary 4 Science (Term 4)

0 pts

An object X was placed in a black sealed box with a small hole at the side.



Patricia looked through the hole in the box to see what the object X was.

She could not see object X. Explain why. (1 mark)

This question is designed for extended answers that parent/ teacher will have to assign and guide child to attempt after the test has been completed.

Grading: This question type is not graded on this system and will not affect the final score as it was designed in such a way that it requires manual assistance.

Question Type: Essay
Date Added: Fri 30th Jul 2021
Last Modified: N/A
QID#: 28,566,625

Correctly answered feedback

There was no light source to reflect light by the ball into her eyes.

Incorrectly answered feedback

There was no light source to reflect light by the ball into her eyes.

[Answers](#) | [Edit](#) | [Duplicate](#) | [Used In](#) | [Reorder](#)

[Remove From Test](#)

Question 41

Primary 4 Science » Primary 4 Science (Term 4)

0 pts

An object X was placed in a black sealed box with a small hole at the side.



Patricia looked through the hole in the box to see what the object X was.

Without changing the box, what could she do so that she can see the object X in the box. (1 mark)

This question is designed for extended answers that parent/ teacher will have to assign and guide child to attempt after the test has been completed.

Grading: This question type is not graded on this system and will not affect the final score as it was designed in such a way that it requires manual assistance.

Question Type: Essay
Date Added: Fri 30th Jul 2021
Last Modified: N/A
QID#: 28,566,633

Correctly answered feedback

She could put a light source in the box.

Incorrectly answered feedback

She could put a light source in the box.

[Answers](#) | [Edit](#) | [Duplicate](#) | [Used In](#) | [Reorder](#)

[Remove From Test](#)

Question 42

Primary 4 Science » Primary 4 Science (Term 4)

0 pts

An object X was placed in a black sealed box with a small hole at the side.



Patricia looked through the hole in the box to see what the object X was.

Patricia changed the cover of the box and she was able to see object X in the box through the new cover.

What can you conclude about the property of the material of the new cover? (1 mark)

This question is designed for extended answers that parent/ teacher will have to assign and guide child to attempt after the test has been completed.

Grading: This question type is not graded on this system and will not affect the final score as it was designed in such a way that it requires manual assistance.

Question Type: Essay
Date Added: Fri 30th Jul 2021
Last Modified: N/A
QID#: 28,566,644

Correctly answered feedback

The new cover was transparent and allowed light to pass through it easily.

Incorrectly answered feedback

The new cover was transparent and allowed light to pass through it easily.

[Answers](#) | [Edit](#) | [Duplicate](#) | [Used In](#) | [Reorder](#)

[Remove From Test](#)

Question 43

Primary 4 Science » Primary 4 Science (Term 4)

1 pt

The adult Aedes mosquito spreads dengue fever in human.
 The table below shows how temperature affects the duration of the different stages in the life cycle of the Aedes mosquito.

Temperature (°C)	Duration (days)			
	Egg stage	Larval stage	Pupal stage	Total
24	2	9	2	13
26	2	8	2	12
28	2	7	2	11
30	2	6	2	10

Which stage of the mosquito life cycle is affected by the increase in temperature? (1 mark)

Accepted answers:

✓ larva

Question Type: Free Text
Date Added: Fri 30th Jul 2021
Last Modified: N/A
QID#: 28,566,743

[Answers](#) | [Edit](#) | [Duplicate](#) | [Used In](#) | [Reorder](#)

[Remove From Test](#)

Question 44

Primary 4 Science » Primary 4 Science (Term 4)

0 pts

The adult *Aedes* mosquito spreads dengue fever in human.
The table below shows how temperature affects the duration of the different stages in the life cycle of the *Aedes* mosquito.

Temperature (°C)	Duration (days)			
	Egg stage	Larval stage	Pupal stage	Total
24	2	9	2	13
26	2	8	2	12
28	2	7	2	11
30	2	6	2	10

Based on the results above, explain how the increase in temperature affects the duration of the complete life cycle of the mosquito. (2 marks)

This question is designed for extended answers that parent/ teacher will have to assign and guide child to attempt after the test has been completed.

Grading: This question type is not graded on this system and will not affect the final score as it was designed in such a way that it requires manual assistance.

Question Type: Essay
Date Added: Fri 30th Jul 2021
Last Modified: N/A
QID#: 28,566,765

Correctly answered feedback

The increase in temperature decreases the duration of the life cycle.

Incorrectly answered feedback

The increase in temperature decreases the duration of the life cycle.

[Answers](#) | [Edit](#) | [Duplicate](#) | [Used In](#) | [Reorder](#)

[Remove From Test](#)

Question 45

Primary 4 Science » Primary 4 Science (Term 4)

1 pt

The adult *Aedes* mosquito spreads dengue fever in human.
The table below shows how temperature affects the duration of the different stages in the life cycle of the *Aedes* mosquito.

Temperature (°C)	Duration (days)			
	Egg stage	Larval stage	Pupal stage	Total
24	2	9	2	13
26	2	8	2	12
28	2	7	2	11
30	2	6	2	10

State one way how we can prevent the breeding of mosquitoes at home.

Accepted answers:

- ✓ Remove stagnant water

Question Type: Free Text
Date Added: Fri 30th Jul 2021
Last Modified: N/A
QID#: 28,566,782

[Answers](#) | [Edit](#) | [Duplicate](#) | [Used In](#) | [Reorder](#)

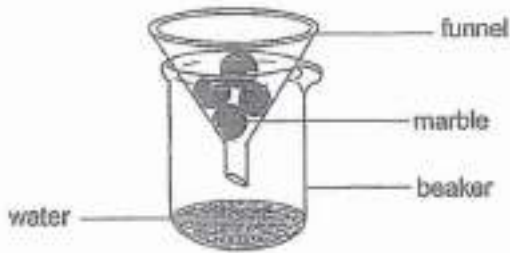
[Remove From Test](#)

Question 46

Primary 4 Science » Primary 4 Science (Term 4)

1 pt

All set up an experiment to find out the different properties of matter. He placed four marbles into a funnel. Then, he poured 50ml of water into the funnel as shown below.



The shape of the marbles will not change if they are placed in a different beaker.

- ✓ A) True
 B) False

Question Type: True False
Date Added: Fri 30th Jul 2021
Last Modified: N/A
QID#: 28,566,798

[Answers](#) | [Edit](#) | [Duplicate](#) | [Used In](#) | [Reorder](#)

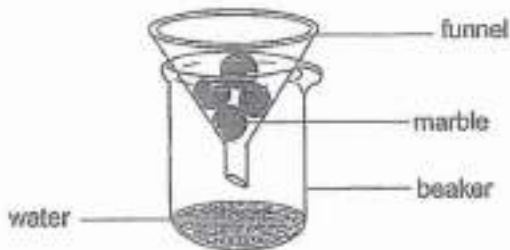
[Remove From Test](#)

Question 47

Primary 4 Science » Primary 4 Science (Term 4)

1 pt

All set up an experiment to find out the different properties of matter. He placed four marbles into a funnel. Then, he poured 50ml of water into the funnel as shown below.



The volume of air in the beaker increased as the water was poured into the beaker.

- A) True
 ✓ B) False

Question Type: True False
Date Added: Fri 30th Jul 2021
Last Modified: N/A
QID#: 28,566,847

[Answers](#) | [Edit](#) | [Duplicate](#) | [Used In](#) | [Reorder](#)

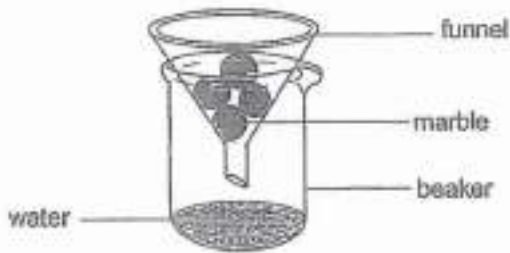
[Remove From Test](#)

Question 48

Primary 4 Science » Primary 4 Science (Term 4)

0 pts

All set up an experiment to find out the different properties of matter. He placed four marbles into a funnel. Then, he poured 50ml of water into the funnel as shown below.



Give a reason why the water was able to flow past the marbles and down into the beaker. (1 mark)

This question is designed for extended answers that parent/ teacher will have to assign and guide child to attempt after the test has been completed.

Grading: This question type is not graded on this system and will not affect the final score as it was designed in such a way that it requires manual assistance.

Question Type: Essay
Date Added: Fri 30th Jul 2021
Last Modified: N/A
QID#: 28,566,867

Correctly answered feedback

Water does not have a fixed shape

Incorrectly answered feedback

Water does not have a fixed shape

[Answers](#) | [Edit](#) | [Duplicate](#) | [Used In](#) | [Reorder](#)

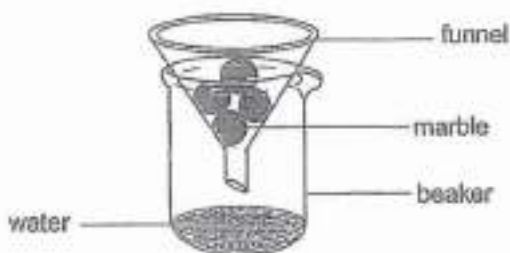
[Remove From Test](#)

Question 49

Primary 4 Science » Primary 4 Science (Term 4)

1 pt

All set up an experiment to find out the different properties of matter. He placed four marbles into a funnel. Then, he poured 50ml of water into the funnel as shown below.



If no water was spilled during the experiment, state the amount of water collected in the beaker at the

end of the experiment.

Accepted answers:

✓ 50ml

✓ 50 ml

Question Type: Free Text
Date Added: Fri 30th Jul 2021
Last Modified: N/A
QID#: 28,566,873

[Answers](#) | [Edit](#) | [Duplicate](#) | [Used In](#) | [Reorder](#)

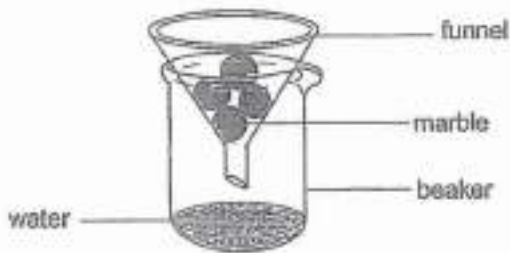
[Remove From Test](#)

Question 50

Primary 4 Science » Primary 4 Science (Term 4)

0 pts

All set up an experiment to find out the different properties of matter. He placed four marbles into a funnel. Then, he poured 50ml of water into the funnel as shown below.



Based on the properties of matter, explain your answer in the previous question. (1 mark)

This question is designed for extended answers that parent/ teacher will have to assign and guide child to attempt after the test has been completed.

Grading: This question type is not graded on this system and will not affect the final score as it was designed in such a way that it requires manual assistance.

Question Type: Essay
Date Added: Fri 30th Jul 2021
Last Modified: N/A
QID#: 28,566,931

Correctly answered feedback

Water has definite volume.

Incorrectly answered feedback

Water has definite volume.

[Answers](#) | [Edit](#) | [Duplicate](#) | [Used In](#) | [Reorder](#)

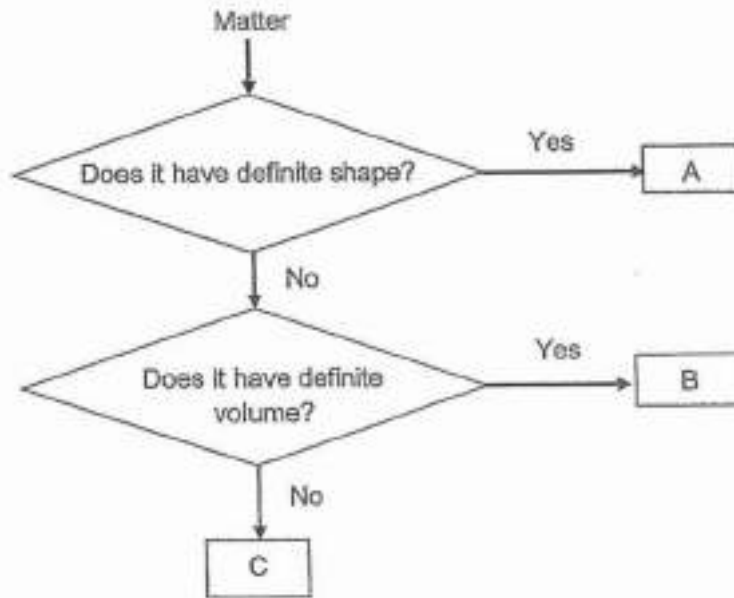
[Remove From Test](#)

Question 51

Primary 4 Science » Primary 4 Science (Term 4)

2 pts

Study the flowchart below.



Which matters, A, B or C best represent a stone and oxygen?

Clue	Match
Stone: _____ Points: +1 -0	A
Oxygen: _____ Points: +1 -0	C
Incorrect match option	B

Question Type: Matching
Shuffle Mode: Shuffle Matches Only
Date Added: Fri 30th Jul 2021
Last Modified: N/A
QID#: 28,566,984

[Answers](#) | [Edit](#) | [Duplicate](#) | [Used In](#) | [Reorder](#)

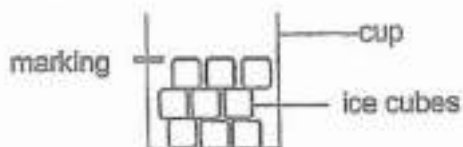
[Remove From Test](#)

Question 52

Primary 4 Science » Primary 4 Science (Term 4)

1 pt

Jennifer left a cup of ice cubes on the table. She marked the level of ice cubes in the cup using a marker as shown below.



She returned an hour later and the ice cubes had melted. State the change in the state of matter in the experiment above. (1 mark)

Accepted answers:

✓ Solid to liquid

Question Type: Free Text
Date Added: Fri 30th Jul 2021
Last Modified: N/A
QID#: 28,567,107

[Answers](#) | [Edit](#) | [Duplicate](#) | [Used In](#) | [Reorder](#)

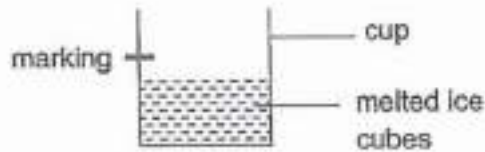
[Remove From Test](#)

Question 53

Primary 4 Science » Primary 4 Science (Term 4)

0 pts

She observed that the level of melted ice cubes was lower than the marking made before the ice cubes melted as shown below.



Based on the properties of matter, explain why the marking of melted ice cubes is lower although no water spilled out of the cup.

[2]

This question is designed for extended answers that parent/ teacher will have to assign and guide child to attempt after the test has been completed.

Grading: This question type is not graded on this system and will not affect the final score as it was designed in such a way that it requires manual assistance.

Question Type: Essay
Date Added: Fri 30th Jul 2021
Last Modified: N/A
QID#: 28,567,121

Correctly answered feedback

The ice cubes did not take the shape of the cup, so there are gaps between them. After the ice cubes melted, the water took the shape of the cup as water does not have a fixed shape.

Incorrectly answered feedback

The ice cubes did not take the shape of the cup, so there are gaps between them. After the ice cubes melted, the water took the shape of the cup as water does not have a fixed shape.

[Answers](#) | [Edit](#) | [Duplicate](#) | [Used In](#) | [Reorder](#)

[Remove From Test](#)

Question 54

Primary 4 Science » Primary 4 Science (Term 4)

0 pts

The diagram below shows a human mouth.



State one way how the mouth helps in the digestion of food.

[1]

This question is designed for extended answers that parent/ teacher will have to assign and guide child to attempt after the test has been completed.

Grading: This question type is not graded on this system and will not affect the final score as it was designed in such a way that it requires manual assistance.

Question Type: Essay
Date Added: Fri 30th Jul 2021
Last Modified: N/A
QID#: 28,567,131

Correctly answered feedback

Teeth cut the food into smaller pieces / Saliva makes the food enough to swallow.

Incorrectly answered feedback

Teeth cut the food into smaller pieces / Saliva makes the food enough to swallow.

[Answers](#) | [Edit](#) | [Duplicate](#) | [Used In](#) | [Reorder](#)

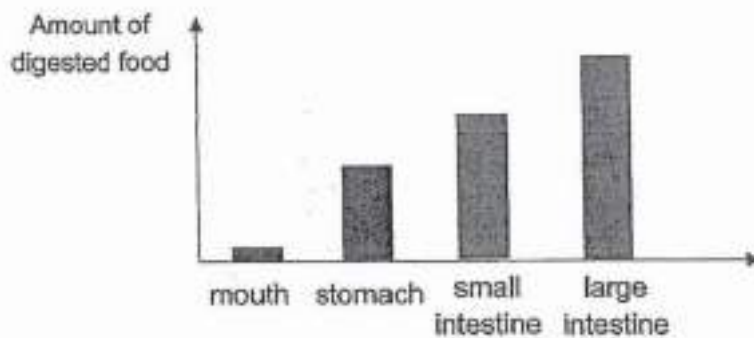
[Remove From Test](#)

Question 55

Primary 4 Science » Primary 4 Science (Term 4)

1 pt

The graph below shows the amount of digested food in four different organs in the digestive system.



Which organ shown in the graph had the wrong amount of digested food? (1 mark)

Accepted answers:

✓ Large intestine

Question Type: Free Text

Date Added: Fri 30th Jul 2021
 Last Modified: N/A
 QID#: 28,567,155

[Answers](#) | [Edit](#) | [Duplicate](#) | [Used In](#) | [Reorder](#)

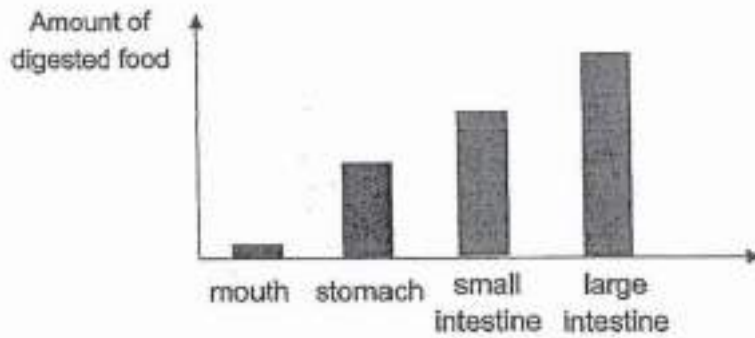
[Remove From Test](#)

Question 56

Primary 4 Science » Primary 4 Science (Term 4)

0 pts

The graph below shows the amount of digested food in four different organs in the digestive system.



Explain your answer in the previous question. (1 mark)

This question is designed for extended answers that parent/ teacher will have to assign and guide child to attempt after the test has been completed.

Grading: This question type is not graded on this system and will not affect the final score as it was designed in such a way that it requires manual assistance.

Question Type: Essay
 Date Added: Fri 30th Jul 2021
 Last Modified: N/A
 QID#: 28,567,449

Correctly answered feedback

There is no digested food in the large intestine. Digestion ends in the small intestine and all the digested food in the small intestine goes into the blood.

Incorrectly answered feedback

There is no digested food in the large intestine. Digestion ends in the small intestine and all the digested food in the small intestine goes into the blood.

[Answers](#) | [Edit](#) | [Duplicate](#) | [Used In](#) | [Reorder](#)

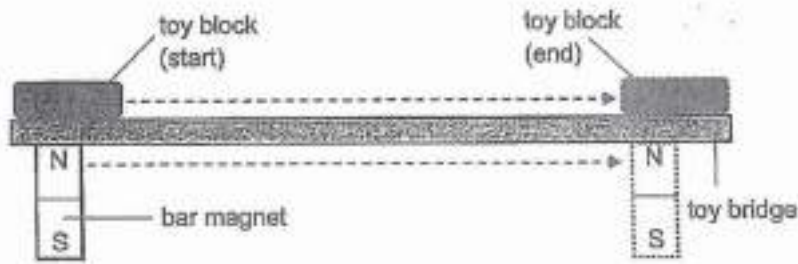
[Remove From Test](#)

Question 57

Primary 4 Science » Primary 4 Science (Term 4)

1 pt

Gevin learnt that magnetism can pass through the toy bridge which was made of a non-magnetic material. So, he placed a bar magnet under one end of the toy bridge and used the magnet to move the toy block to the other end of the bridge as shown in the diagram below.



Suggest a material which the toy bridge could be made of.

Accepted answers:

✓ Plastic

Question Type: Free Text
Date Added: Fri 30th Jul 2021
Last Modified: N/A
QID#: 28,567,487

[Answers](#) | [Edit](#) | [Duplicate](#) | [Used In](#) | [Reorder](#)

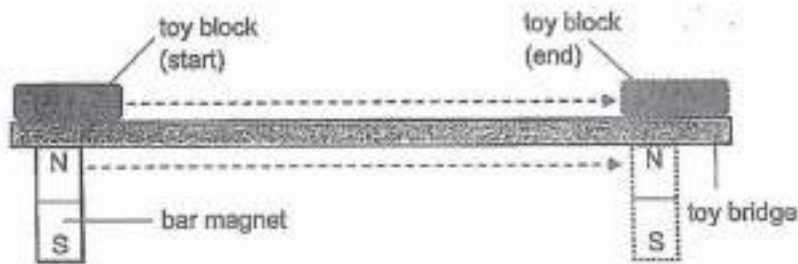
[Remove From Test](#)

Question 58

Primary 4 Science » Primary 4 Science (Term 4)

0 pts

Gevin learnt that magnetism can pass through the toy bridge which was made of a non-magnetic material. So, he placed a bar magnet under one end of the toy bridge and used the magnet to move the toy block to the other end of the bridge as shown in the diagram below.



Explain why the toy block was able to move with the magnet. (2 marks)

This question is designed for extended answers that parent/ teacher will have to assign and guide child to attempt after the test has been completed.

Grading: This question type is not graded on this system and will not affect the final score as it was designed in such a way that it requires manual assistance.

Question Type: Essay
Date Added: Fri 30th Jul 2021
Last Modified: N/A
QID#: 28,568,043

Correctly answered feedback

The toy block was made of a magnetic material so it was attracted by the magnet.

Incorrectly answered feedback

The toy block was made of a magnetic material so it was attracted by the magnet.

[Answers](#) | [Edit](#) | [Duplicate](#) | [Used In](#) | [Reorder](#)

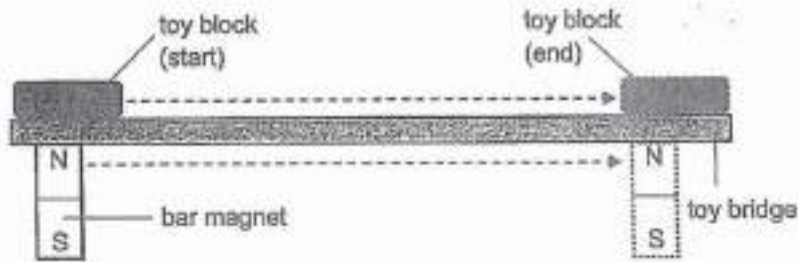
[Remove From Test](#)

Question 59

Primary 4 Science » Primary 4 Science (Term 4)

0 pts

Gavin learnt that magnetism can pass through the toy bridge which was made of a non-magnetic material. So, he placed a bar magnet under one end of the toy bridge and used the magnet to move the toy block to the other end of the bridge as shown in the diagram below.



He replaced the toy block with another toy block of similar mass at the start point. Using the same bar magnet and toy bridge, he tried to move the toy block to the other end of the bridge. However, the block did not move.

Give a reason for his observation. (1 mark)

This question is designed for extended answers that parent/ teacher will have to assign and guide child to attempt after the test has been completed.

Grading: This question type is not graded on this system and will not affect the final score as it was designed in such a way that it requires manual assistance.

Question Type: Essay
Date Added: Fri 30th Jul 2021
Last Modified: N/A
QID#: 28,568,050

Correctly answered feedback

The block was made of non-magnetic, so the magnet could not attract it.

Incorrectly answered feedback

The block was made of non-magnetic, so the magnet could not attract it.

[Answers](#) | [Edit](#) | [Duplicate](#) | [Used In](#) | [Reorder](#)

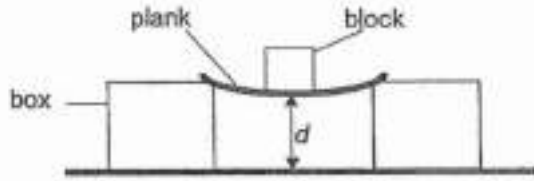
[Remove From Test](#)

Question 60

Primary 4 Science » Primary 4 Science (Term 4)

1 pt

James conducted an experiment using three similar planks, S, T and U, made of different materials. He placed the same block on the planks and measured the distance (d) between the table and the plank as shown below.



He recorded the results in the table below.

Materials	Distance(d) cm
S	6
T	3
U	5

What property of the materials was James testing for?

Accepted answers:

✓ Flexibility

Question Type: Free Text
 Date Added: Fri 30th Jul 2021
 Last Modified: N/A
 QID#: 28,568,058

[Answers](#) | [Edit](#) | [Duplicate](#) | [Used In](#) | [Reorder](#)

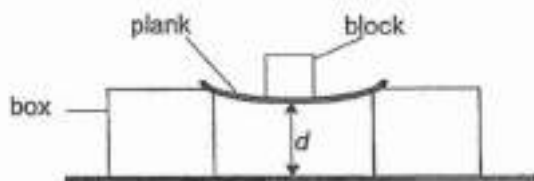
[Remove From Test](#)

Question 61

Primary 4 Science » Primary 4 Science (Term 4)

0 pts

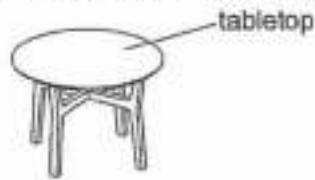
James conducted an experiment using three similar planks, S, T and U, made of different materials. He placed the same block on the planks and measured the distance (d) between the table and the plank as shown below.



He recorded the results in the table below.

Materials	Distance(d) cm
S	6
T	3
U	5

James needed to choose a material to make a tabletop as shown below.



Based on the results above, which material is suitable to make the tabletop? Explain your answer. [2]

This question is designed for extended answers that parent/ teacher will have to assign and guide child to attempt after the test has been completed.

Grading: This question type is not graded on this system and will not affect the final score as it was designed in such a way that it requires manual assistance.

Question Type: Essay
Date Added: Fri 30th Jul 2021
Last Modified: N/A
QID#: 28,568,069

Correctly answered feedback

Materials S. It is the least flexible. The table-top will not bend when we put things on it.

Incorrectly answered feedback

Materials S. It is the least flexible. The table-top will not bend when we put things on it.

[Answers](#) | [Edit](#) | [Duplicate](#) | [Used In](#) | [Reorder](#)

[Remove From Test](#)

Question 62

Primary 4 Science » Primary 4 Science (Term 4)

0 pts

James needed to put heavy books on the table. State one other property of the material to allow him to put heavy books on the table. (1 mark)

This question is designed for extended answers that parent/ teacher will have to assign and guide child to attempt after the test has been completed.

Grading: This question type is not graded on this system and will not affect the final score as it was designed in such a way that it requires manual assistance.

Question Type: Essay
Date Added: Fri 30th Jul 2021
Last Modified: N/A
QID#: 28,568,095

Correctly answered feedback

The material is strong/strength.

Incorrectly answered feedback

The material is strong/strength.

[Answers](#) | [Edit](#) | [Duplicate](#) | [Used In](#) | [Reorder](#)

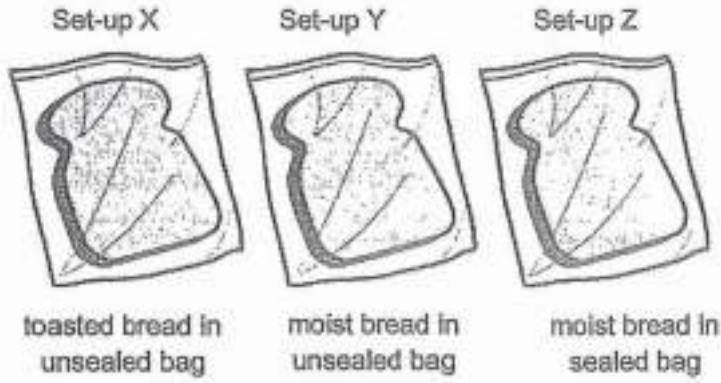
[Remove From Test](#)

Question 63

Primary 4 Science » Primary 4 Science (Term 4)

0 pts

The diagram below shows three different set-ups X, Y and Z with different conditions.



No mould is observed in set-up X after 3 days. Explain why. (1 mark)

This question is designed for extended answers that parent/ teacher will have to assign and guide child to attempt after the test has been completed.

Grading: This question type is not graded on this system and will not affect the final score as it was designed in such a way that it requires manual assistance.

Question Type: Essay
Date Added: Fri 30th Jul 2021
Last Modified: N/A
QID#: 28,568,130

Correctly answered feedback

The toasted bread has no water. The bread mould needs water to grow.

Incorrectly answered feedback

The toasted bread has no water. The bread mould needs water to grow.

[Answers](#) | [Edit](#) | [Duplicate](#) | [Used In](#) | [Reorder](#)

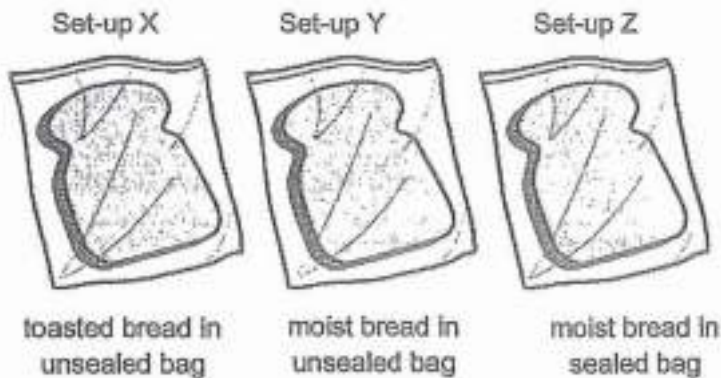
[Remove From Test](#)

Question 64

Primary 4 Science » Primary 4 Science (Term 4)

0 pts

The diagram below shows three different set-ups X, Y and Z with different conditions.



There is more mould growing in set-up Y than set-up Z. Explain why. (2 marks)

This question is designed for extended answers that parent/ teacher will have to assign and guide child

to attempt after the test has been completed.

Grading: This question type is not graded on this system and will not affect the final score as it was designed in such a way that it requires manual assistance.

Question Type: Essay
Date Added: Fri 30th Jul 2021
Last Modified: N/A
QID#: 28,568,160

Correctly answered feedback

There is more air in Set-up Y than Set-up Z. The bread mould needs air to grow.

Incorrectly answered feedback

There is more air in Set-up Y than Set-up Z. The bread mould needs air to grow.

[Answers](#) | [Edit](#) | [Duplicate](#) | [Used In](#) | [Reorder](#)

[Remove From Test](#)

www.classmarker.com